

32 School Lane, Didsbury Village, Manchester, M20 6RG



**JP & Brimelow**  
ESTATE AGENTS

# Offers In The Region Of £350,000

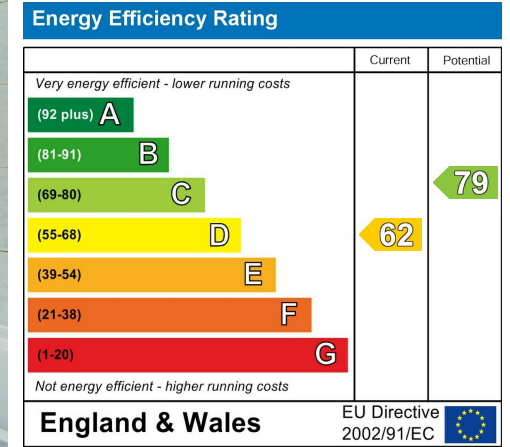
2 1 2 D

\*\*\*VIDEO TOUR AVAILABLE\*\*\* A TWO DOUBLE BEDROOM period, mid-terrace property, occupying a prime Village position. The property sits in the heart of Didsbury Village, close to a selection of independent boutique shops, popular bars, restaurants and cafes. Didsbury Park is also within strolling distance. The Metrolink station, off School Lane provides direct access into the city centre, Media City and West Didsbury Village. The well-planned accommodation consists of an entrance hallway, a lounge to the front aspect, a dining room with a view into the rear garden and a fitted kitchen to complete the ground floor, with access out into the rear enclosed courtyard. The first floor reveals a landing with two well-portioned double bedrooms with high ceilings and a three-piece bathroom. This property further benefits from gas-fired central heating and both front and rear courtyards. Internal inspection is highly recommended to appreciate the space available in this Didsbury Village home.



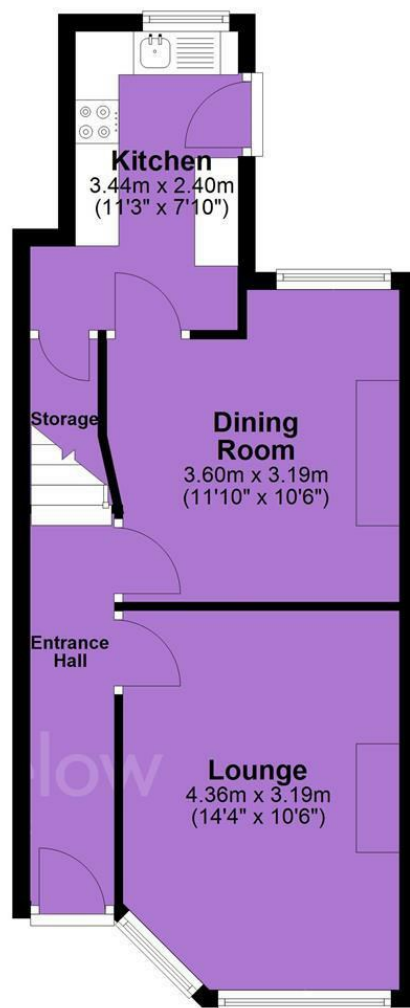


## EPC Chart

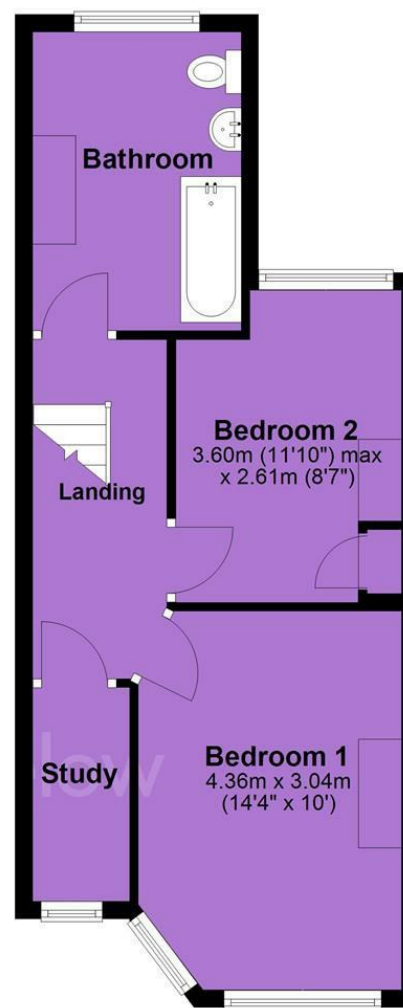


Tenure: **Leasehold** Council Tax Band: **C**

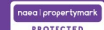
## Ground Floor



## First Floor



JP & Brimelow Estate Agents Ltd  
430 Barlow Moor Road, Manchester, M21 8AD  
Tel: 0161 8822233  
E: sales@jpbimelow.co.uk www.jpandbrimelow.co.uk



**JP & Brimelow**  
ESTATE AGENTS

NOTICE: JP & Brimelow Estate Agents Ltd for themselves and for the vendors or lessors of this property whose agents they are give notice that:

- (i) the particulars are set out as a general outline only for the guidance of intending purchasers or lessees, and do not constitute, nor constitute part of, an offer or contract;
- (ii) all descriptions, dimensions, references to the condition and necessary permissions for use and occupation, and other details are given in good faith and are believed to be correct but any intending purchasers or tenants should not rely on them as statements or representations of fact but must satisfy themselves by inspection or otherwise as to the correctness of each of them;
- (iii) no person in the employment of JP & Brimelow Estate Agents Ltd has any authority to make or give any representation or warranty whatever in relation to this property.

jpbimelowstateagents

@jpbimelow